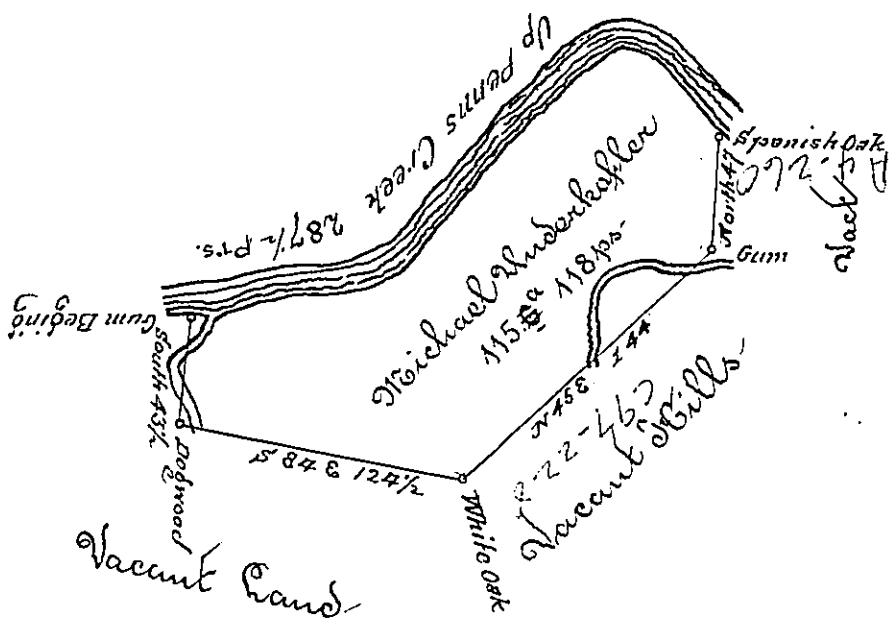


The courses up Creek
 210 ... N 51 W 56 Pts
 S 42 W 139 1/2
 S 75 W 92
 287 1/2



The Draught of a Tract of Land called situate in Penns Town
 ship Northumberland County containing one Hundred and fifteen Acres
 and one Hundred and eighteen perches with the usual allowance of six
 ac^r 7^r Cent for Roads Surveyed the 6th Day of October Anno Domini 17
 72 in pursuance of a Warrant from the Hon^{ble} the Proprietaries to Mi-
 chael Underkoffler bearing date at Philad^a the 8th day of Septem^r Anno
 Domini 1772

To John Lukens Esq^r Sur^r Gen^l of }
 the Province of Pennsylvania }

Wm Woaclay D.D.

IN TESTIMONY that the above is a copy of the original remaining on file in the
 Department of Internal Affairs of Pennsylvania, made con-
 formably to an Act of Assembly approved the 16th day of
 February, 1833, I have hereunto set my Hand and caused
 the Seal of said Department to be affixed at Harrisburg, this

Seventh day of January 1896

James W. Latta
 Secretary of Internal Affairs.